



**EMERGENCY SERVICE MEMBERS – COVID-19 UNPROTECTED EXPOSURE GUIDELINES**  
**MARCH 21, 2020 – 1500 HOURS**

**THIS BULLETIN IS BEING ISSUED TO ASSIST POLICE, FIRE, AND EMS CHIEFS IN DECIDING IF A MEMBER OF SERVICE NEEDS TO BE SELF-MONITORING, QUARANTINED, AND/OR TESTED FOR COVID-19. WHILE THIS INFORMATION IS TIMELY AS OF TODAY, THIS SITUATION IS FLUID AND IS SUBJECT TO CHANGE BASED ON COMMUNITY SPREAD, PPE AVAILABILITY, AND STATEWIDE EMERGENCY SERVICES RESOURCES.**

Referenced language:

Unprotected exposures are defined as those exposures during which the Member of Service is not wearing all required Personal Protective Equipment (PPE). This PPE includes a face mask (or higher respiratory protection), eye protection, gloves, and a gown. **If your Member experiences an unprotected exposure, follow the algorithms at the end of this document.**

Protected exposures are defined as those exposures where the Member is wearing the proper PPE (face mask, eye protection, gloves, and gown). **These exposures do not require any further action.**

Quarantine separates and restricts the movement of people who were exposed to a contagious disease to see if they develop symptoms of COVID-19; no medical care is given.

Prolonged close contact is being within six feet of a person with COVID-19 for a prolonged period of time without appropriate PPE or having unprotected direct contact with infectious secretions or excretions of the person.

Symptoms of COVID-19 include the following: fever, cough, shortness of breath/difficulty breathing, fatigue, chills, nausea, and/or headache.

Unprotected Exposure Algorithms:

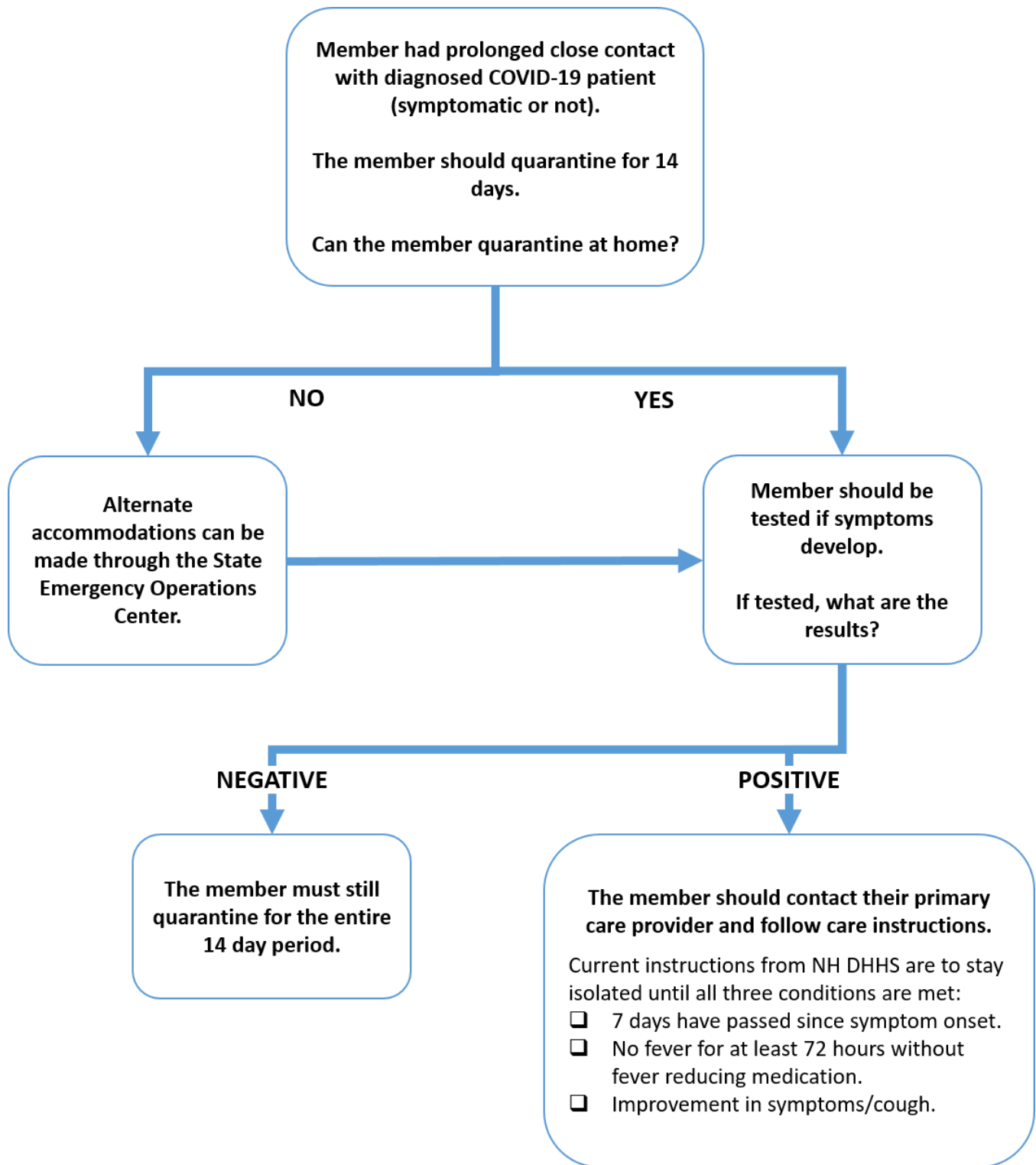
Below are three separate and circumstantially specific algorithms that provide guidance on how to plan for and if necessary, react to the exposure or potential exposure of a Member to someone with COVID-19. **Members are reminded to report the first sign of any COVID-19 symptoms to their immediate supervisors.**

NOTE:

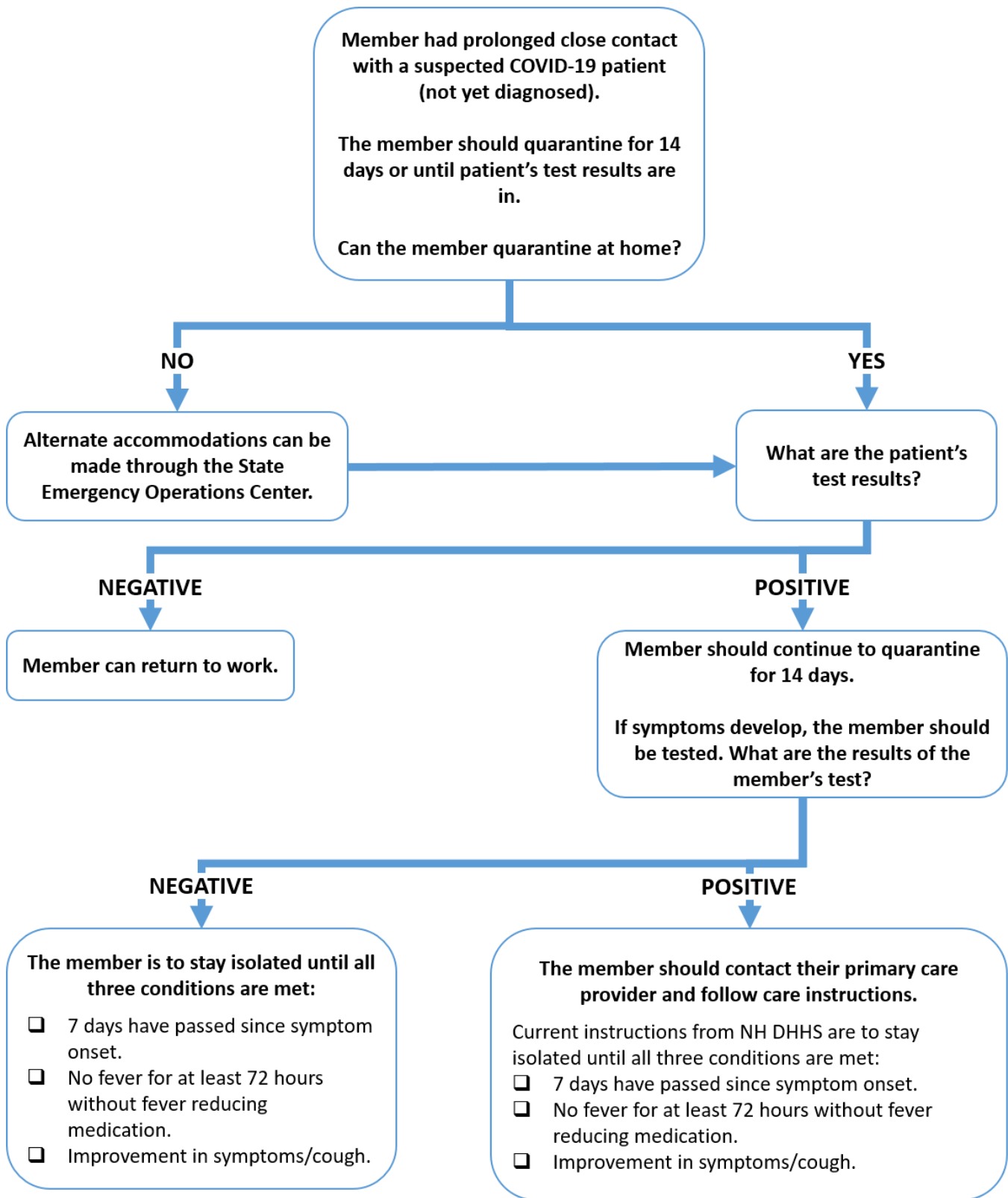
For those Members providing EMS/healthcare services, guidance from the CDC for assessing risk and managing healthcare personnel with potential COVID-19 exposure should be followed. While we are currently recommending quarantine for asymptomatic members under algorithm #1 and #2, we may reach a point where employers have exposed Members wear a facemask while at work for the 14 days after the exposure event if there is a sufficient supply of facemasks and critical mass is reached on staffing. If Members develop even mild symptoms consistent with COVID-19, they must cease all work activities, and notify their supervisor prior to leaving work. For complete guidance, see CDC guidance at the website provided below;

<https://www.cdc.gov/coronavirus/2019-ncov/hcp/guidance-risk-assesment-hcp.html>

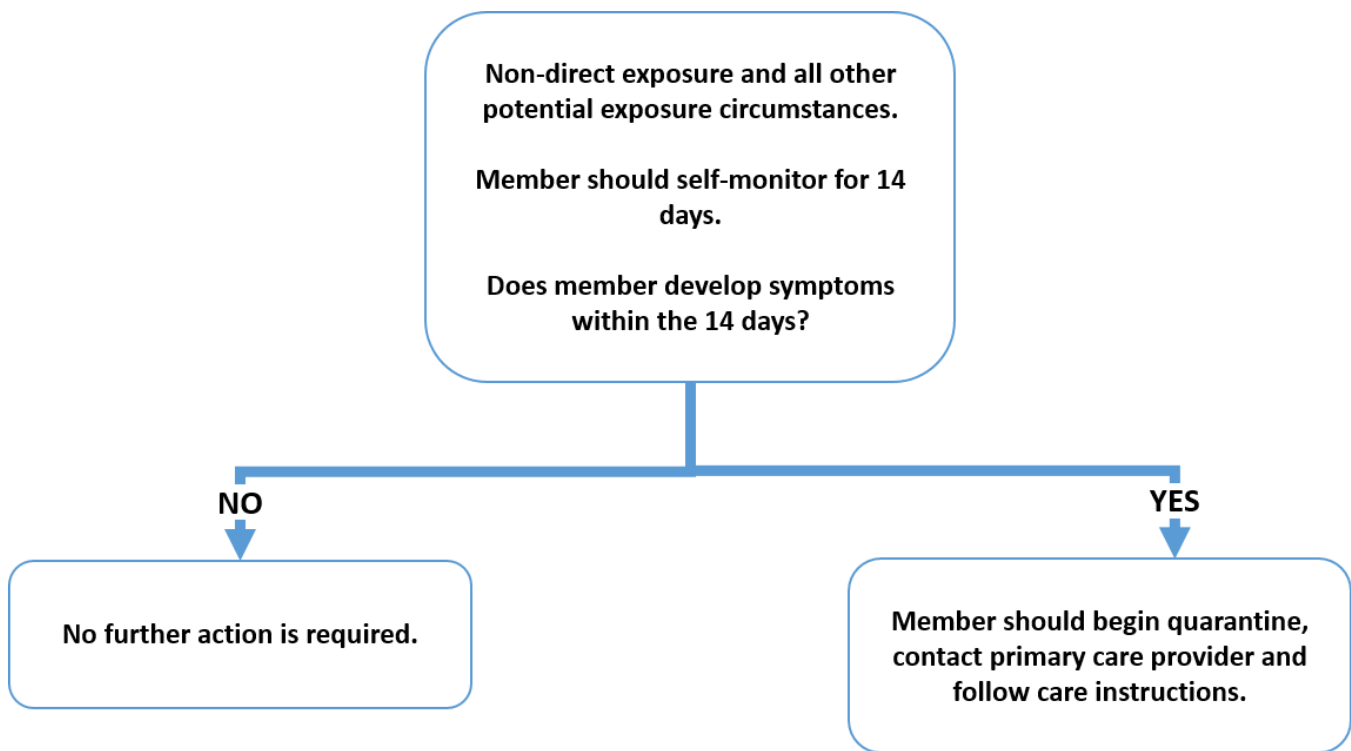
**UNPROTECTED EXPOSURE – CONFIRMED COVID-19 PATIENT - ALGORITHM # 1**



**UNPROTECTED EXPOSURE – SUSPECTED COVID-19 PATIENT - ALGORITHM #2**



### **UNPROTECTED EXPOSURE – NON-DIRECT CONTACT - ALGORITHM #3**



#### **EXAMPLES:**

1. A Member has dinner with his sister, the next day he finds out that his sister visited her friend over the last couple of days and her friend has since been diagnosed with COVID-19. Neither the Member nor his sister are exhibiting any symptoms.
2. A Member treats a patient with no COVID-19 symptoms and later learns that the patient had recently been in contact with someone who has been diagnosed with COVID-19. The COVID-19 subject was exhibiting symptoms during the contact with the patient. The Member is not exhibiting any symptoms.
3. A Member treats a patient with no COVID-19 symptoms and later learns the patient recently returned from a trip out of the country, the Member is not exhibiting any symptoms.
4. A Member's close family member who lives in the same residence has been in contact with someone who has a confirmed case of COVID-19. This family member must self-quarantine for 14 days and monitor for any symptoms. The member does not also need to quarantine unless the family member develops symptoms.
5. Members are working together through a shift, in the middle of the shift one member develops COVID-19 symptoms and is sent home for the remainder of the shift. The remaining Members need to evaluate the contact that they had with the symptomatic Member throughout the shift. If they had prolonged close contact, meaning they were within six feet of each other for any significant amount of time, then they should refer to Algorithm 2 for guidance on how respond to the possible exposure. If they did not have prolonged close contact for any significant amount of time and were not within six feet of each other then the Member should refer to Algorithm 3 for guidance on how to respond to the possible exposure.